

# Vinyl Display Prints



www.robinimaging.com  
2106 Central Parkway  
Cincinnati, OH 45214  
(513) 381-5116  
Info@robinimaging.com

## Description

Vinyl prints are weatherproof and allow you to display your work inside or outside. They are printed on a 10-color solvent printer and have a very large color gamut capable of producing extremely vibrant colors.

We offer:

- Two choices of vinyl material
- Luster or matte laminate
- 4 mounting substrates.
- Multiple hanging methods

## Vinyl choices

- Calendared vinyl is less costly and is easier to apply if you choose to apply it yourself. It should only be used on flat surfaces. It has a life span of about 5 years for outside use. When used in applications that have a wide temperature range it may show shrinking around the edges due to the thermal expansion and contraction of the substrate it is mounted on.
- Cast vinyl is more conformable and has a longer life. It will last about 9 years in outdoor situations. It will not shrink around the edges and has a slightly smoother surface.

## Laminate choices

To ensure long life a laminate is applied to our vinyl prints. You have a choice of:

- Luster – has a somewhat brighter appearance due to the blacker blacks. For interior or exterior use.
- Matte – eliminates the reflection sheen that can occur with Luster laminate. For interior or exterior use.
- Soft Touch – adds a little more depth and softness to the image. For interior use only.

## Metal backing

We offer a choice of 2 different metals to mount to

- Aluminum Composite Metal – is 3mm thick and is similar to the one sided ACM, but it is more rigid since the aluminum skins is .008" rather than .006". The surface also tends to be smoother. The backside of E-Panel has a white

finish. This is our most popular mounting substrate, and it is recommended for artwork.

- .080 Aluminum is solid aluminum. It is the same thickness as road signs. It is extremely durable, but much higher in price due to the amount of metal.

All the above metals can be shape cut as needed on our CNC router and holes can be drilled for easy installation.

## Vinyl Wraps

Vinyl Wraps are good for both indoor and outdoor use.

We print on cast vinyl, apply a laminate, and adhere it to white PVC with the vinyl wrapped around the edges of the board to give a finished look.

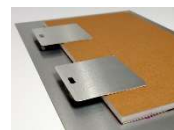
When laying out the artwork it is important to remember to make the image area 1" larger on all sides to allow for the image to extend around the sides.

The most common thickness for vinyl wraps is ½", but it is also available in ¼" and ¾" thick.

## Mounting Hardware

- CDV prints can be displayed with or without frames.
- When used with frames, glass is not needed. This allows for reflection-free viewing, less cost, and easy shipping.
- When used without frames, they provide a very clean look allowing all the attention to be focused on the image.
- Lighting issues are not a problem with the matte surface since it is reflection free.
- Graphics can easily be cleaned with a soft cloth and glass cleaner.

### Shadow Mount



This is the most popular method of display. A Gatorfoam block with aluminum hangers is attached to the back of the print allowing it to be hung on the wall with a nail or screw.

Once hung it appears that the image is floating ½" from the wall. Indoor use only.

### Aluminum Frame back



An aluminum frame is attached to the back of the metal. This frame can be hung using wire or a Z-Bar hanger.

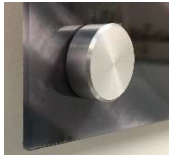
Once hung it appears that the image is floating  $\frac{3}{4}$ " from the wall.

### Cleats



PVC or MDF cleats are applied to the back. This floats the graphic  $\frac{1}{2}$ " off the wall and keeps it stable so that it will not tilt.

### Standoffs



The panel can be mounted to a wall using aluminum standoff posts. We offer a large variety of sizes and finishes.

### Bolts



We can drill holes and the CDV print can be bolted to a signpost or other structure.

# Vinyl Print Pricing

## Vinyl on Aluminum Board

Size	Calendared Vinyl on ACM	Calendared Vinyl on .080 Alum.	Cast Vinyl on ACM	Cast Vinyl on .080 Alum.
11x14	66.72	84.57	71.54	89.39
12x12	50.80	62.70	54.59	66.49
12x18	73.04	90.89	78.65	96.50
16x16	77.12	94.97	83.24	101.09
16x20	95.29	117.60	103.03	125.34
16x24	101.31	123.62	109.80	132.11
20x20	102.82	125.13	111.50	133.81
20x24	126.03	154.59	136.34	164.90
24x24	134.69	163.25	146.07	174.63
24x30	156.92	189.64	170.29	203.01
24x36	188.30	227.57	204.34	243.61
30x30	210.37	256.18	227.93	273.74
30x40	257.00	313.23	278.40	334.63
32x48	310.07	375.52	336.33	401.78
36x36	264.53	320.76	286.86	343.09
40x40	332.32	403.72	360.24	431.64
40x50	398.17	481.47	432.03	515.33
40x60	471.83	572.98	511.51	612.86
48x48	447.44	542.64	485.20	550.40
48x72	671.16	813.96	727.80	870.60
48x96	850.88	1022.24	926.40	1097.76

- Prices may vary based on current material prices. Please get a quote for exact prices.
- Your choice of Luster or Matte laminate
- Drill 4 holes \$8.10
- Drill 6 holes \$10.80
- Standoffs are available in various sizes

## Vinyl Wraps

Size	¼" Vinyl Wrap	½" Vinyl Wrap
11x14	56.24	79.79
12x12	44.39	60.09
12x18	63.35	86.90
16x16	67.94	91.49
16x20	83.90	113.34
16x24	90.67	120.11
20x20	92.37	121.81
20x24	111.86	149.54
24x24	121.59	159.27
24x30	142.24	185.41
24x36	170.68	222.49
30x30	188.66	249.10
30x40	230.21	304.39
32x48	280.23	366.58
36x36	238.67	312.85
40x40	299.04	393.24
40x50	360.63	470.53
40x60	424.81	558.26
48x48	403.6	529.20
48x72	605.40	793.80
48x96	779.52	1005.60

- Prices may vary based on current material prices. Please get a quote for exact prices.
- All vinyl wraps are printed on Cast vinyl
- Your choice of Luster or Matte laminate