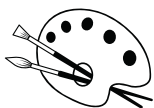


LIVING ARTFULLY SELF DRIVE TOUR

SUGGESTED ITINERARY 9.00am - 5.00pm Tour



Meet us at the Loviz Arts Gallery
9am – Tour of Gallery and art on display at Rydges –



Purchase the Living Artfully Guidebook



10am - Binnorie Dairy – Cheese Tasting



11am - Gartelmann Wines – wine tasting



12.30pm - Hunter Belle Cheese Room Lunch



2pm - Pokolbin Cider House – Cider/Wine/Beer Tasting
Paddle



3pm - Sabor – Share a dessert



4pm - Sydney Brewery if staying at Rydges Resort Hunter Valley or if wanting a drink & dinner at Lovedale Bar + Resturant.

You are welcome to mix and match the venues, view the full list of venues available to you on the Loviz Arts Trail, on our Art Trail page on the website.

[Click here to view the different venue options now.](#)