

Beverly & Luella™

COLLECTION BY JUDY TRESNOWSKI ART & DESIGN



Beverly Gesmondi



Luella Steward

Beverly & Luella is a unique fashion collection carefully crafted to create a seamless non-patterned visual landscape. Each piece is created with love, imagination, and memories from beautiful places. Watercolors and a fine pen are used to capture movement, colors, and intricate details of objects and nature. Wrap yourself in an elegant Beverly & Luella scarf or sarong.

Beverly & Luella are two very important women in my life, my mother, Beverly, and paternal grandmother, Luella. They influenced my life with their loving support encouraging me to embrace my creativity and free-spirit. Honoring them is my inspiration. Thank you for allowing me to share my art and our story with you. Like what you see? Work with me and join me in this exciting journey.*

– Judy Tresnowski

*contact information on back cover

Ukraine Sunflowers

My great-grandfather,
Nicholas Trzesniowski, was
Ukrainian. The strength and
the resilience of his people
during these current times
does not surprise me.





Peanut Island Water

Kayaking in the waters
around Peanut Island,
Florida, includes star fish
crawling on the ocean floor
along with manatee asking
to swim along. The water
has so many shades of
blue, green, and purple.



Door County Forests

I have been enjoying the peninsula of Door County Wisconsin for 40 years. My mother loved this magical place and we believe her spirit lives on there.





West Palm Beach

I became obsessed with
this one palm at my sister's
West Palm Beach home. Did
you know that palms are
not a tree?



Key West Buoys

I just recently discovered
the Florida Keys and found
many colorful images.

These buoys are some of
my favorite objects from
my travels there.





Capital Cherry Blossoms

Best time of year in
Washington D.C. is
spring, of course! The
Cherry Blossom trees are
in full bloom and for a
short while.



Annapolis Harbor

Spent some time kayaking
on the Chesapeake in
Annapolis. Great waters,
great history and great
food. Always get the
soft shell crab.





Monhegan Island

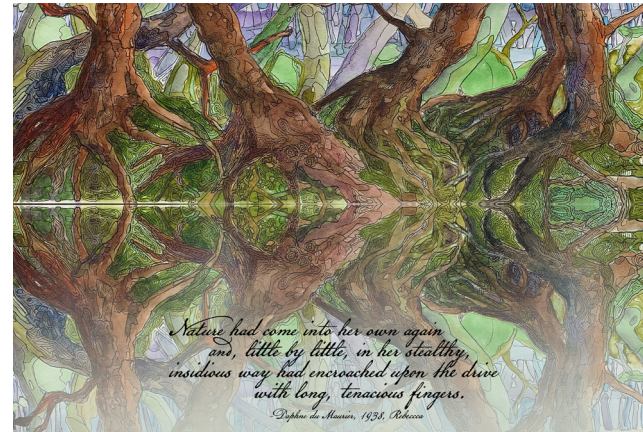
Since the mid-1800's, artists have flock to this storied island off the coast of Maine to paint the uniqueness of the geography, plant life, fishing life, buildings and weather.





Blue Ridge Mountains

A visit to Asheville, North Carolina was highlighted by hiking the Blue Ridge Parkway.



Book Passages

Scarves with book proses.

This one is from Daphne du Maurier's "Rebecca."




Quotes

Water is a source of comfort, challenge, beauty, power, and sometimes danger, but most of all magic.



Store

ARTWORK	ITEM NUMBER	SIZE	MATERIAL	PRICE
<i>Monhegan Island</i> 	SCARF 1001 SARONG/WIDE SCARF 1002 SARONG/DRESS 1003	36" x 44" 36" x 52"*** 52" x 72"***	100% Bamboo Silk* Poly Crepe de Chine Poly Crepe de Chine	\$95/AVAILABLE \$65/On Demand \$75/On Demand
<i>Ukraine Sunflowers</i> 	SCARF 2001 SARONG/WIDE SCARF 2002 SARONG/DRESS 2003	22' x 72" 36" x 52" 52" x 72"	100% Bamboo Silk Poly Crepe de Chine Poly Crepe de Chine	\$95/Pre-Order \$65/On Demand \$85/On Demand
<i>Peanut Island</i> 	SCARF 3001 SARONG/WIDE SCARF 3002 SARONG/DRESS 3003	22' x 72" 36" x 52" 52" x 72"	100% Bamboo Silk Poly Crepe de Chine Poly Crepe de Chine	\$95/Pre-Order \$65/On Demand \$85/On Demand
<i>Cherry Blossoms</i> 	SCARF 4001 SARONG/WIDE SCARF 4002 SARONG/DRESS 4003	22' x 72" 36" x 52" 52" x 72"	100% Bamboo Silk Poly Crepe de Chine Poly Crepe de Chine	\$95/Pre-Order \$65/On Demand \$85/On Demand
<i>Kier West Buoy's</i> 	SCARF 5001 SARONG/WIDE SCARF 5002 SARONG/DRESS 5003	22' x 72" 36" x 52" 52" x 72"	100% Bamboo Silk Poly Crepe de Chine Poly Crepe de Chine	\$95/Pre-Order \$65/On Demand \$85/On Demand
<i>Door County Forest</i> 	SCARF 6001 SARONG/WIDE SCARF 6002 SARONG/DRESS 6003	22' x 72" 36" x 52" 52" x 72"	100% Bamboo Silk Poly Crepe de Chine Poly Crepe de Chine	\$95/Pre-Order \$65/On Demand \$85/On Demand

Store

<i>West Palm Beach</i> 	SCARF 7001 SARONG/WIDE SCARF 7002 SARONG DRESS 7003	22' x 72" 36" x 52" 52" x 72"	100% Bamboo Silk Poly Crepe de Chine Poly Crepe de Chine	\$95/Pre-Order \$65/On Demand \$85/On Demand
<i>Annapolis Harbor</i> 	SCARF 8001 SARONG/WIDE SCARF 8002 SARONG DRESS 8003	22' x 72" 36" x 52" 52" x 72"	100% Bamboo Silk Poly Crepe de Chine Poly Crepe de Chine	\$95/Pre-Order \$65/On Demand \$85/On Demand
<i>Blue Ridge Mts.</i> 	SCARF 9001 SARONG/WIDE SCARF 9002 SARONG DRESS 9003	22' x 72" 36" x 52" 52" x 72"	100% Bamboo Silk Poly Crepe de Chine Poly Crepe de Chine	\$95/Pre-Order \$65/On Demand \$85/On Demand
<i>Book Quotes</i> 	SCARF 10001 SARONG/WIDE SCARF 10002 SARONG DRESS 10003	22' x 72" 36" x 52" 52" x 72"	100% Bamboo Silk Poly Crepe de Chine Poly Crepe de Chine	\$95/Pre-Order \$65/On Demand \$85/On Demand
<i>Water Quote</i> 	SCARF 11001 SARONG/WIDE SCARF 11002 SARONG/DRESS 11003	22' x 72" 36" x 52" 52" x 72"	100% Bamboo Silk Poly Crepe de Chine Poly Crepe de Chine	\$95/Pre-Order \$65/On Demand \$85/On Demand

*Why Bamboo? Traditional silk fabric is made from silk worms and to get the silk it requires killing the worm. Bamboo pulp is plentiful and grows in abundance and makes a beautiful fabric. The feel is identical to traditional silk fabric and environmentally friendly.

** 36" x 52" will fit US small and medium sizes.

*** 52" x 72" will fit US large and extra large sizes.



COLLECTION BY JUDY TRESNOWSKI ART & DESIGN

judytresnowskiart.com

jtaandd@gmail.com

847-644-3792