

Hello, and welcome to another issue from Eva's "Drawn To Nature "Studio" !



Happy New Year!



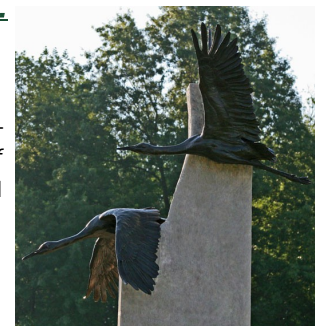
Top Sculpture Awards Wrap Up One Year, And Usher In The Next....

Artists For Conservation Foundation

Artists For Conservation, one of two premiere international wildlife art organizations in the world, awarded my bronze Sandhill Cranes from "The Winds of Change" the 2013 "Award of Excellence", during AFC's annual "International Exhibit of Nature in Art" fall show and festival, held in Vancouver, British Columbia. A very great honor, indeed!



Photography by Eva Stanley



America's Parks II

Ushering in 2014, "America's Parks II" awarded "Eyes On The Prize", my two life size Roadrunners with Collared Lizard on Prickly Pear Cactus sculpture, the top 2014 sculpture award by unanimous vote of the jurors!

The annual "America's Parks" show recognizes and celebrates all levels of North American Parks, from city parks to national parks, within the United States, Canada, and Mexico. Each piece submitted for the show acknowledges a particular park where the artist's subject matter is found. The primary theme for the 2014 show is Parks of the Southwestern U.S. and Northern Mexico.

In this Issue:	Page
Awards	1,2
New Waxes	2
Sculpture Process, Chapter 1	2,3,4
Studio Moves, Travel (or not!)	4
Wildlife Photography	1,2,5,6
Links	5,6

My roadrunner piece is dedicated to New Mexico's *Bosque Del Apache National Wildlife Refuge*, a place I have often photographed roadrunners and their antics, while also enjoying the visions and voices of tens of thousands of wintering Sandhill Cranes and Snow Geese, along with raptors, waterfowl, coyotes, pheasants, bobcats – and as my dear friend, Sharon Fullingim, was fortunate enough to discover this year, from the safe blind of a vehicle – a family of mountain lions! It is a truly remarkable place that I heartily recommend visiting by all wildlife lovers!

Am's Pks Cont. P 2 "Eyes On The Prize" - Greater Roadrunners, Collared Lizard, Prickly Pear Cactus, Ltd. Ed. 25, © Eva Stanley



Photography by Mel Schockner

Sculpture Awards cont.

Two of my other works were also juried into "America's Parks II", and both were awarded Honorable Mentions! These pieces were "Beaded Lace" – the life size Gila Monster lizard on a Cholla Cactus skeleton and red sandstone; and the wall hanging "Desert Denizen" – the life size Western Screech Owl in a Saguaro Cactus hole.

This "Grand Slam" of having three pieces accepted into the show, and having all three pieces receive awards, is an unbelievably nice way to start off the New Year!!

The "America's Parks II" Show will open at the Ella Carothers Dunnegan Gallery of Art in Bolivar, Missouri on March 16th, 2014, and run through April 13, 2014.

The show will then tour through 2014, with the venue schedule lining up as follows:

The Wildlife Experience Museum, Parker (Denver), Colorado, May 24 to August 10, 2014.

The Arizona Sonora Desert Museum, Tucson, Arizona, September 13 to October 26, 2014.

(Other Venues May Be Added.)



Hopefully, these three sculptures will each find new homes of their own along the way!

News From The Studio....

The first piece of the limited edition of "Eyes On The Prize" (roadrunners) has now been installed at its new home at Na 'Āina Kai Sculpture and Botanical Gardens in Kauai, Hawaii. That means the rush is now on to produce the 2nd of the limited edition for the America's Parks II Show! The waxes have all been poured, chased, and delivered to the foundry (this is such a complicated piece, involving 32 separate molds!), and the first raw metal should begin returning at the end of the week. Then, the push to complete the rest of the process, and have it ready to ship by mid-February, moves into high gear again! (Thank goodness the other two pieces are all ready to ship!)



New Waxes ready on the Foundry shelves!
 (See the feet attached to the cactus pads?)

Photography © by Eva Stanley



"Waxes on the Half-Shell"?

New base ready to go!



Taking up a lot of space!



In the meantime....

I am also working on a Black-crowned Night Heron commission (which is about half-finished at this point), as well as a bas relief wall hanging piece of 3 running elk cows, which I think will be an interesting piece!

Photographic Journey of the Night Heron creation, Chapter 1..... I thought you might enjoy arm-chair traipsing along with me, and watching the creation of a new piece from start to finish.

So, today, we will begin with the inspiration and conception of the new piece, creation of the armature (skeleton), and the initial "claying up" of the Black-crowned Night Heron sculpture!

This commission began with a photograph taken by a local fellow birder and collector of my work. To that idea, we added a photo that I took in Florida last January.



Photographic Journey of the Night Heron creation, Chapter 1 cont.....

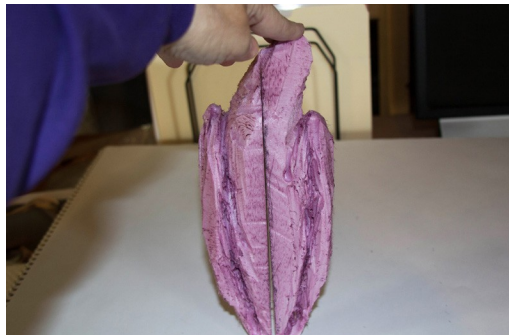
Armatures—

After sketches are created and approved, the next step is the creation of an armature, or skeleton, that will give a base structure to hold the clay. Since this bird is in a hunting position, the bird will eventually be standing on a curved branch that will extend down to the simulated surface of the water. Since the branch has not been selected yet, I engineered the leg armatures to be able to flex at the joints, to accommodate whatever branch shape we come up with later.



Since birds have a fused backbone, the only parts of the body trunk that can be moved are the neck/head and the tail. Therefore, the armature for the body can be stiff.

A roughly sculpted Styrofoam base provides an excellent light-weight shape in which to embed the leg "bones", and to begin attaching the initial clay.

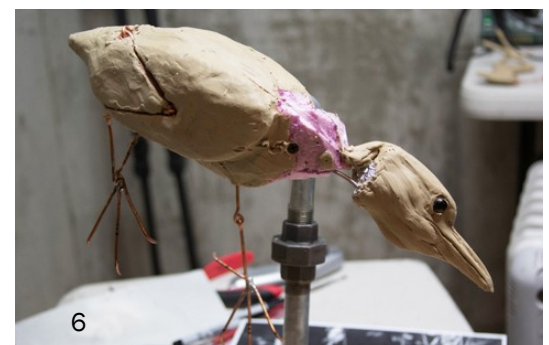
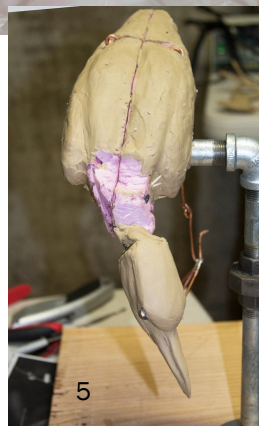


Fun fact....

Ever wonder just what purpose the wishbone serves in birds? It actually creates the space in the skeleton where the neck vertebrae can sink down into the body. This is why birds often can appear to have no real neck, and at other times, their necks can stretch out to amazing lengths!

"Claying-Up" -

The initial clay is now applied over the new armature, and measurements are taken all along the way, building up slowly until the body mass begins to assume the correct proportions.



Photographic Journey of the Night Heron creation, Chapter 1 cont.....

More Clay—

Slowly, but surely, the night heron begins to emerge from the clay, and the artist begins to finally feel that it actually is possible!

Stay tuned next time for further progress on the Black-crowned Night Heron!



There is always more to do, than there are hours or umphf to accomplish, but the important thing is to keep moving forward!

Studio Relocation Update

The fall studio relocation, from my outside studio to the house studio - in the midst of the Colorado floods- was finally accomplished, with the flood waters only seeping in the first 4" of the doorway! (Across the street, they had 2' of water in their businesses, so I was very lucky to escape the damage.)

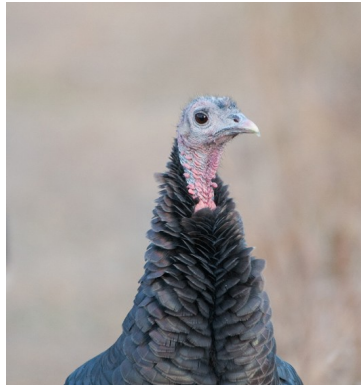
The basement floor is sealed, the new electrical is in place, the lights are up, and it is now a very functional space! That said, as the metal chasing on the 2nd roadrunners begins, which is a noisy and dirty process that a suburban home studio can't really accommodate, I will temporarily shift back to the old studio space for the welding, chasing, and patina work. Always something! Now, if the weather will just cooperate a little, so I can once again move the big air compressor..... (we have finally had about 7" of snow in the last 24 hours, ending, for the moment anyway, our lovely fall-type weather we have been experiencing)!

Travel

Sadly, there were no fall trips to Yellowstone or Mt. Evans this year. But I did finally make it up to Rocky Mountain National Park for a day of wildlife photography at the tail end of the elk rut. At that point, only the highway from Boulder was repaired and open (took 3 ½ hours going that way, instead of the usual 1 hour from Loveland), though I am happy to report that all 4 Front Range access highways to Estes Park are now open and functional, and locals are still awed at what was accomplished in such a short time. Hwy 34, alone, from Loveland to Estes Park, had 17 miles of lost roadway that had to be filled and rebuilt. Pretty amazing. Never underestimate the power of water!

Well.... that is about all the current news from this neck of the woods! Hope you enjoy this next little selection of wildlife photography! (Remember, you can increase the size of the page, up in the box at the top that says "%" to increase the size of the photos!)

May the New Year hold much joy and love for you and all you hold dear!



Remember, if you have enjoyed this newsletter, I encourage you to share it with anyone and everyone, private and corporate, alike! I am trying to build a bigger audience for my work, and can only succeed with the help of friends like you! If they would like to continue to receive it, have them send a quick e-mail!

Na 'Āina Kai Botanical Gardens, Kauai, Hawaii

<http://www.naainakai.org>

Artists For Conservation Foundation

<http://www.natureartists.com>

America's Parks II

<http://www.davidjwagnerllc.com/competitions.html>

Bosque Del Apache National Wildlife Refuge

http://www.fws.gov/refuge/bosque_del_apache/

Ella Carothers Dunnegan Gallery of Art , Bolivar, Missouri

<http://www.dunnegangallery.org/index.html>

The Wildlife Experience Museum, Parker, Colorado

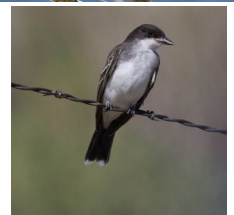
<http://www.thewildlifeexperience.org>

Arizona Sonora Desert Museum, Tucson, Arizona

<http://www.desertmuseum.org/>



Cont. P 6



Professional Art Organizations:

Society of Animal Artists—Associate Member

Website: <http://www.societyofanimalartists.com>

National Sculpture Society—Associate Member

Website: <http://www.nationalsculpture.org>



Artists For Conservation Foundation—Signature Member

Website: <http://www.natureartists.com>

American Women Artists—Former Signature Member

If you are interested in seeing all of my work, both 3-D and 2-D, go to the home page of:

<http://www.natureartists.com>

- 1) On the left side of the page, you will see a box for "Artist Quick Jump" 2) Click for the drop-down box and scroll down, and select "Stanley, E", and "Go" This will take you to my site page.
- 3) Click on "Artwork", and it will show you my three categories of work.
- 4) Click on "View Artwork", and click on any piece that you would like to enlarge and/or see information about!

Sounds complicated, but it really isn't!

Now at a Blog near you! (This, and SO much more!)

Go to: EvasWildlifeArt.WordPress.com



All images, art, and text © Eva Stanley 2013.

I encourage you to forward this e-mail as long as it includes this copyright notice.

Please contact Eva Stanley if you would like to reproduce this newsletter in any form.

Happy Trails!

To subscribe / unsubscribe to these newsletters, please reply to this email with "Subscribe" or "Unsubscribe" in the subject line.