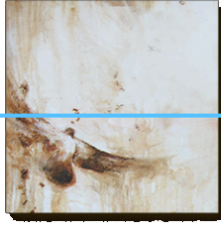


Giddy, how's it hanging? Up to you, really!

Here's some pigeon layout suggestions:

- Leave a 1.5" to 2" gap between your prints. More if it feels better.
- Use a level or chalk line to check that prints are aligned.
- Decide if you want to 'center' the prints or align edges. Or both. Your eye will find the composition more calming if you throw in a few alignments - but not *everything* has to line up.







(Or vertically, of course)



You might find that your wall wants the prints a bit more spread out, or tightly spaced at. One end then floating off with greater spacing. I used this idea in one exhibition to make it look like the pigeons had just come in the window and were spreading out into the room. Have fun! - Paula