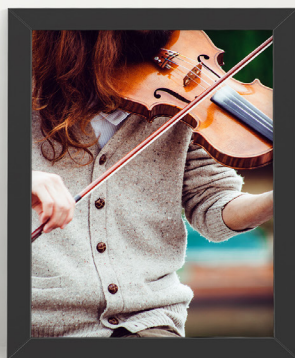
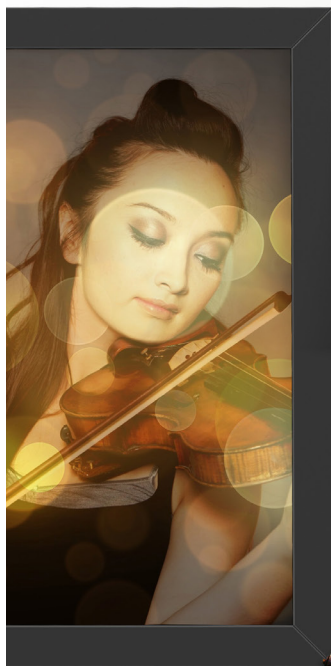


# CELEBRATE *your* STORY

## GUIDE TO HANGING YOUR FRAMED ART



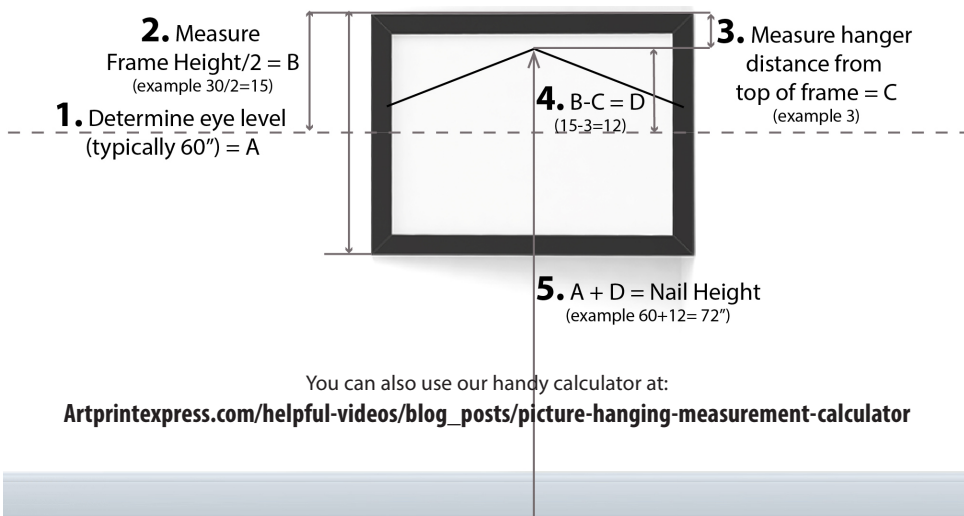
**artprint**  
*express.com*

art & photo      print & frame  
**here for the ARTSY**



# HANGING *your* PIECE

Maximizing the impact of your artwork, height is important to your overall enjoyment. Your art whether as a single piece or grouping (treated as a whole unit) it should be hung centered at eye level. To save your walls from stray nail holes, here is a simple formula to get the exact height for your nail.



## Combining *art* and Furniture

If your art is being displayed over furniture special considerations will be needed to create a pleasing setting and the suggested eye level will need to be adjusted.

The space between the furniture and the piece or grouping should be 4 - 6 inches from the highest point on the items below the piece. If it is placed too high it become out of harmony with the other items in the room. Lowering the eye level measurement for seating areas such as kitchens and offices is recommended.

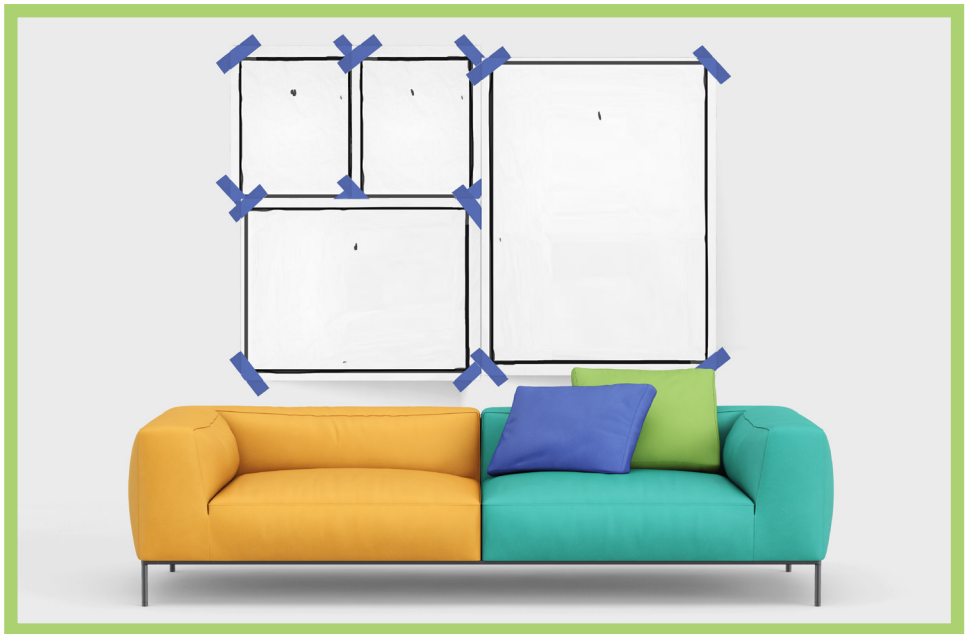


# CREATING *your* STORY WALL

Once you have chosen the perfect place to display your piece you can decide how many pieces and how large they will need to tell your story.

For a large area, many smaller pieces can be more visually interesting than a single large one. Depending on your decor style, consider a common visual element to link all the pieces together such as a single frame style, a color pallet or subject.

The more variety, the more eclectic the collection is and if you follow these hanging tips even the most wild combination of pieces and frames will be harmonious on your wall.



## PLANNING *your* LAYOUT

It is always good to start with a plan. The easiest way is to make a paper template of your pieces by outlining them on large pieces of paper and then taping the templates on the wall for arrangements.

This is also very handy when planning your nail holes for the grouping.

When hanging an entire group, they are treated as a whole unit and the center should be at eye level or about 60".

# SYMMETRICAL LAYOUTS

Symmetrical layout is a balanced combination where one side mirrors the opposite side. This layout lends itself to a more orderly and balanced setting. It uses the same sizes and orientations of pieces in the unit.



# ASYMMETRICAL LAYOUTS

An asymmetrical layout is an unbalanced combination that lends itself to an eclectic and artistic mood. It uses a variety of sizes and orientations of pieces. There are two ways to plan your display to find a pleasing display.

## FRAME EDGE >>

The easiest method for planning and growing your collection is to align each piece by the edge of the frames within the grouping. Aligning the top, bottom and center of these 5 pieces create harmony in this unbalanced grouping. There is room to grow with a new piece or two on the upper right hand side.



## << FRAME CENTER

If you have a grouping that is complete a visual harmony can be achieved by aligning groups of frames within the groups from the centers of each. Here the large frame on the right is centered to the grouping on the left as is the pair above the larger piece centered on the piece on bottom left. Then the whole unit is centered over the couch.

