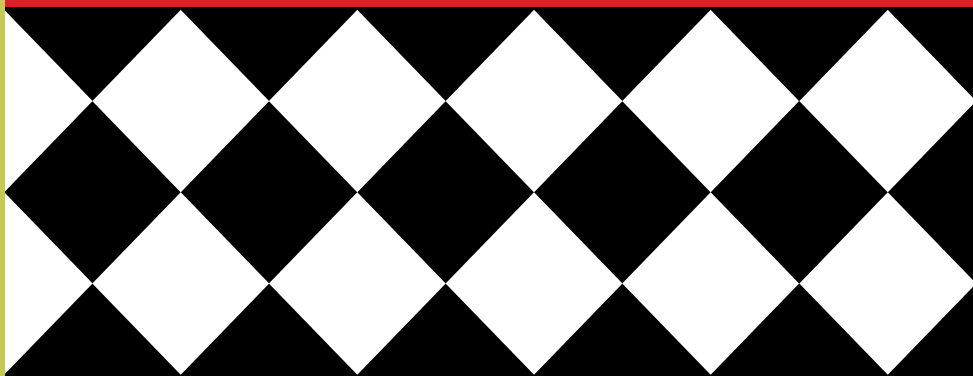


15 WOMEN

A **collection** of portrait paintings
and **considerations**



The Gallery at Medicine Wheel Productions
November 3, 2010 - February 24, 2011

JANE HENRY PARSONS

15 WOMEN

The Gallery at Medicine Wheel Productions
November 3, 2010 - February 24, 2011

An opportunity for a solo show,
a desire to
celebrate women,
who are powerful,
creative,
positive,
and contribute
in ways that
are valid
and appreciated
in everyday life.

An opportunity to promote positive energy,
a sense of worth,
that hopefully spreads
to the sisterhood,
and beyond.

A special thanks to

Michael Dowling

at medicinewheelproductions.org

whose spirit,
guidance,
and support,
has touched many lives,
including mine.

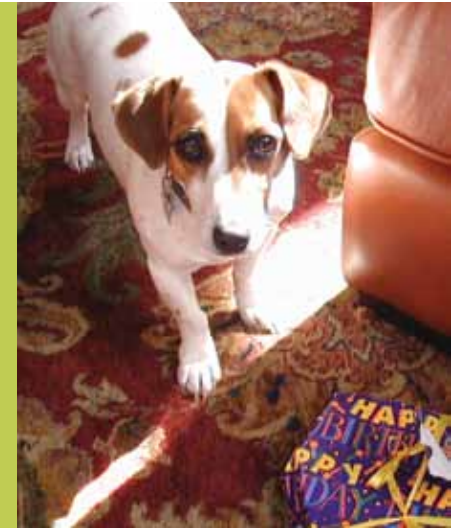
Copyright © 2011 by Jane Henry Parsons

All rights reserved.

www.janehenryparsons.com

dedicated to

Ruby

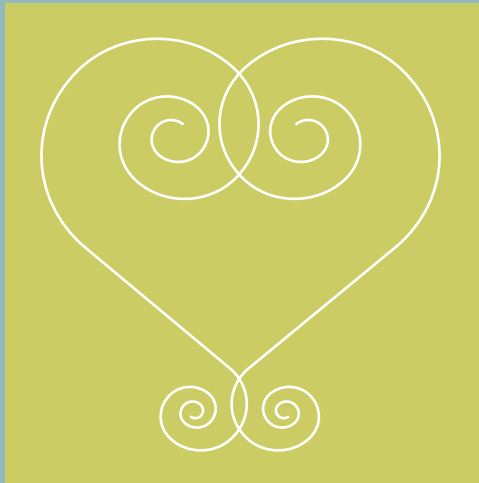


(May 8, 1998- November 11, 2010)

Loyal,
loving,
protective,
dogged.

energized,
purposeful,
smart,
intuitive.

Loved.



It all began with vulnerability...

Having children leaves you open to feeling vulnerable.
There is such a strong pull to keep them safe,
to want the best, at least what you think is best for them.
We want a better life and often compensate
for what lacked in our own childhood.
So, we are asked to make decisions for another's life
when we don't have all the answers for our own.

Ultimately the children are their own beings,
there is only so much a parent can control.
Why is it that some parents have control and their
children follow the path they have laid out for them?
Is this what makes a successful parent?
Is it failure to accept we can't always have it our way?
We can help guide when the water is too rough,
but can you really contain a wave?
Isn't the best solution to ride along with it
and hope it washes calmly ashore in the end?

Children are part of us though and
unlike waves that are never ending.
That pull to keep them safe and strong
and away from danger never leaves us.

We all do some things well, and others not at all.
We all doubt ourselves, and have no doubt.
We are all vulnerable and invincible too.

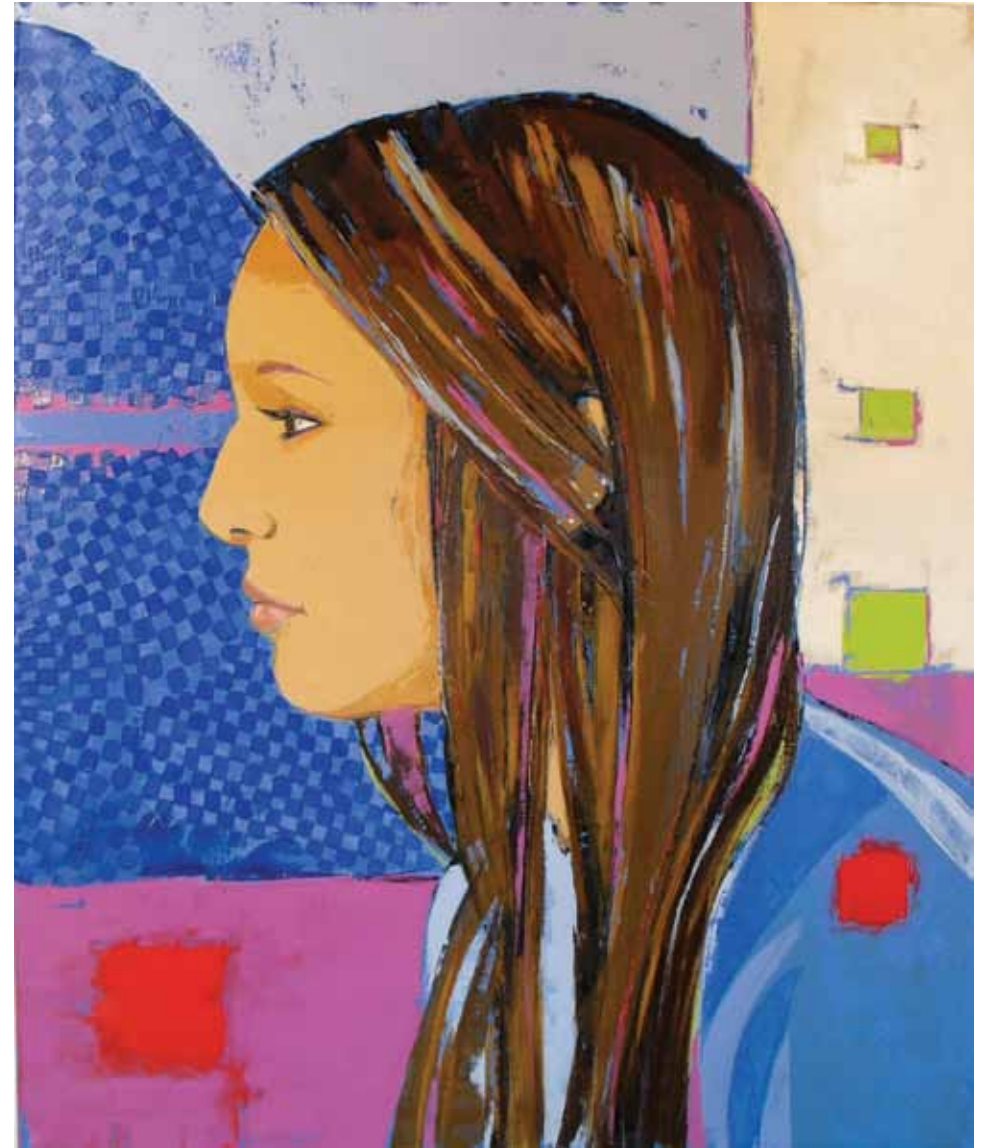
Women nurture and inspire in quiet ways.
We create nests for living and life.
We work behind the scenes and also centerstage.
The sisterhood can be strong and powerful
and sometimes cruel and destructive.

"Fifteen Women" is a drop in the ocean of women
who are a powerful force of supportive energy.
You may never know these spirits,
but you know others.

Jane



Jane



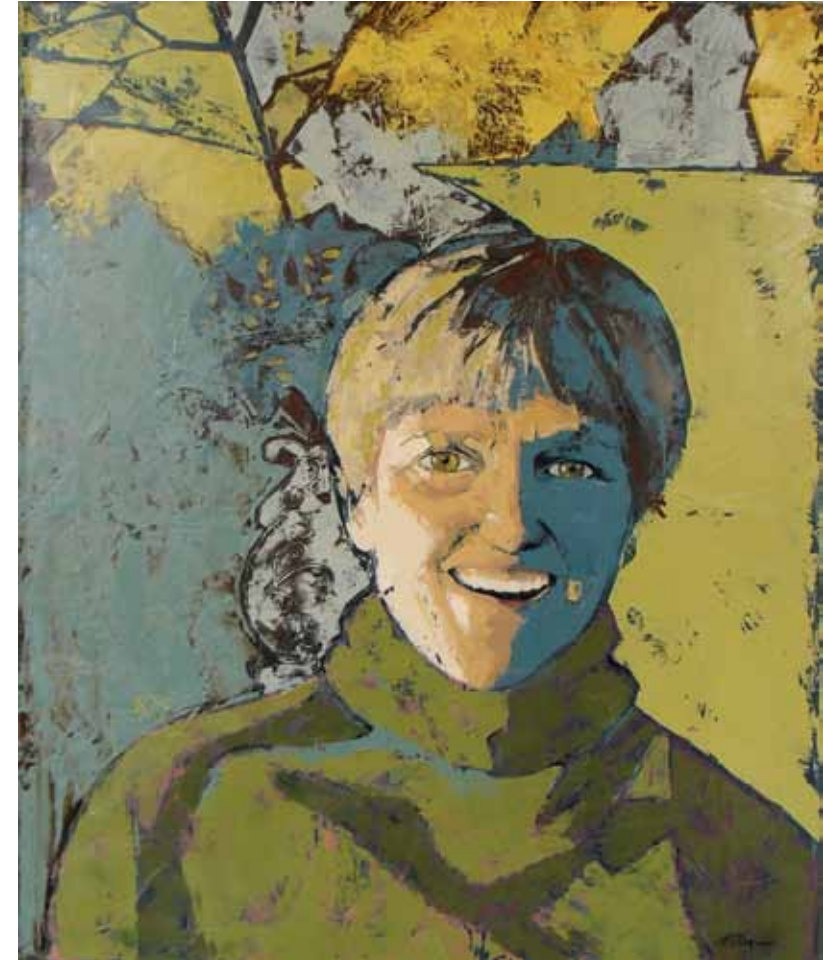
Cayla

Fordie

Mother of triplets,
survivor,
marathon runner,
artist.

Owner of
boundless energy
and enthusiasm.

Gardener extraordinaire,
maker of magical spaces.



Pat

Seeker,
seer,
sensor
of all things
intangible.

Creator
of environments,
soother.



Jane

Artist,
wife,
mother.

Thinker,
planner of
life's design.

Sensitive,
strong,
creator of
connections.



Wendy

Patient will,
silent strength,
dreamy artist.

Mother,
wife,
and strong spirit.



Pauline

Humorous,
high energy creator,
builder,
painter,
fixer.

Collector,
designer of
beautiful objects.

All done
with a bit
of dramatic flair.



Ruth

Grower,
maker,
earthbound,
painterly artist.

Gracious,
warm,
unsure,
caregiver to all.



Sarah

Spreader
of her gentle,
creative,
trusting
spirit.

Calm,
content,
survivor,
positive force.



Chris

Interested,
curious,
down to earth.

Positive energy,
upbeat,
sees the good
around her.



Stephanie

Inspirational
storyteller,
empathetic listener.

Lover of
the human element,
intuitive,
warm.

Always
evolving.



Cayla

Bursting
with life,
caring,
sensitive
and capable.

Fiery,
sassy,
funny
and
unpredictable.

Marches
to the beat
of her
own drum.



Nancy

Caregiver,
artist,
fearless
mark maker.

Sensitive,
caring
and empathetic
in nature.

Complex.



Susan

Warm,
kind,
self-contained
and
stoic.

Wife,
mother
and grandmother.

Calm,
quiet strength
of character.



Rhonda

Wife,
mother,
artist,
bold
mark maker.

Determined will,
vigilant
and
daring.

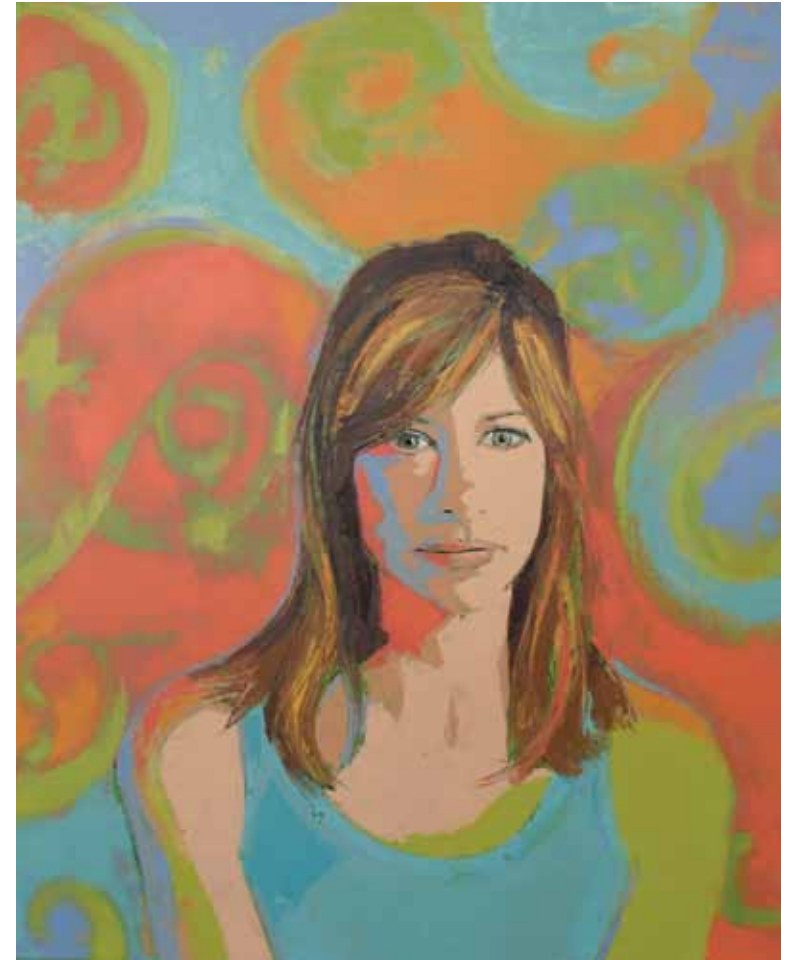
A planner.



Karen

Wife,
mother,
baker,
generous
giver
of her gifts.

Loyal,
trustworthy,
an
independent
thinker.



Lori

Enthusiastic,
creative,
active,
confident.

Fills
you up
with
infectious
good fun.



Celebrate

Those who are
positive
and caring.

Cultivate
friendships,
empower others.

Promote
personal
and
collective
power.

Honor
the goodness
and the gifts
in giving.





For more information on the artist visit

www.janehenryparsons.com